

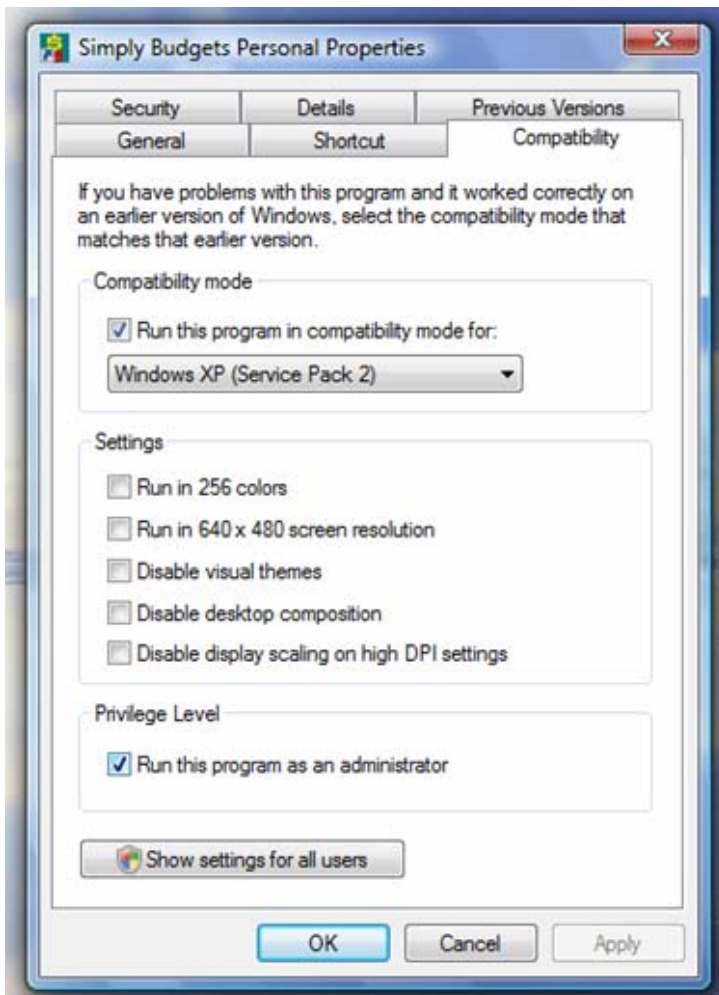
Windows Vista and Simply Budgets

Simply Budgets will run smoothly on Windows Vista as long as the following steps are taken.



- Hold your mouse over the Simply Budgets Icon on your desktop.
- Press your **RIGHT** mouse button.
- A menu will appear.
- **LEFT** click on **'Properties'**
- **LEFT** click on the **Compatibility** Tab
- Tick the Box **'Run this program as an administrator'**
- **LEFT** click on OK

You will see in the example below that the Compatibility mode has been set to run Simply Budgets in Windows XP (Service Pack 2) mode. This is usually not necessary.



The following detailed instructions are for people who have followed the above instructions but are still experiencing difficulties (rare).

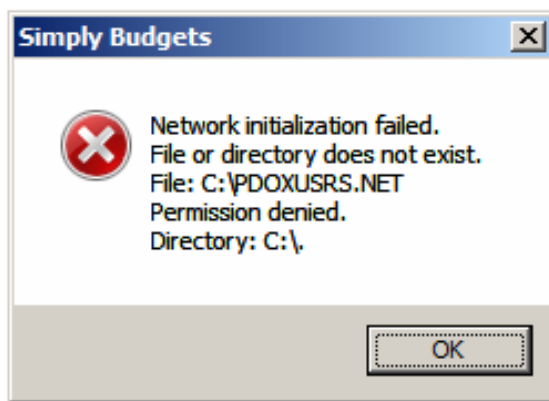
Simply Budgets is written in a computer language that requires two components to be installed on your computer for it to operate.

The first is the Simply Budgets files that contain all the data and instructions and the second is a database engine that does the calculations. The engine used is provided by a company called Borland.

When the Borland Database engine is installed some settings were created. One is a simple instruction telling the Borland Database Engine Administrator (bdeadmin) where to create and place a file called PDOXUSRS.NET

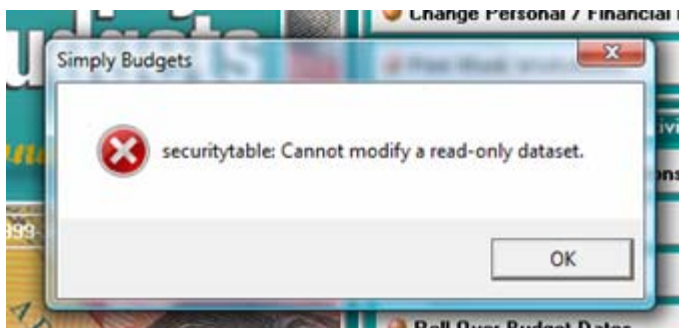
In all earlier versions of Simply Budgets this was set to be placed in the root directory (folder) of your C drive (C:\).

Unfortunately, Microsoft have now decided with the release of Windows Vista that you have to be a very important person with very special privileges and administrative rights before you can write a file to C:\. That is why the following error message appears when you try to run Simply Budgets using Vista.



This message is telling you that the file could not be created. You did not have permission to put it in the Directory 'C:\' and so it was not created at all.

Here is another error message you may have encountered that is related to the same problem.



There are two simple ways to solve this problem:-

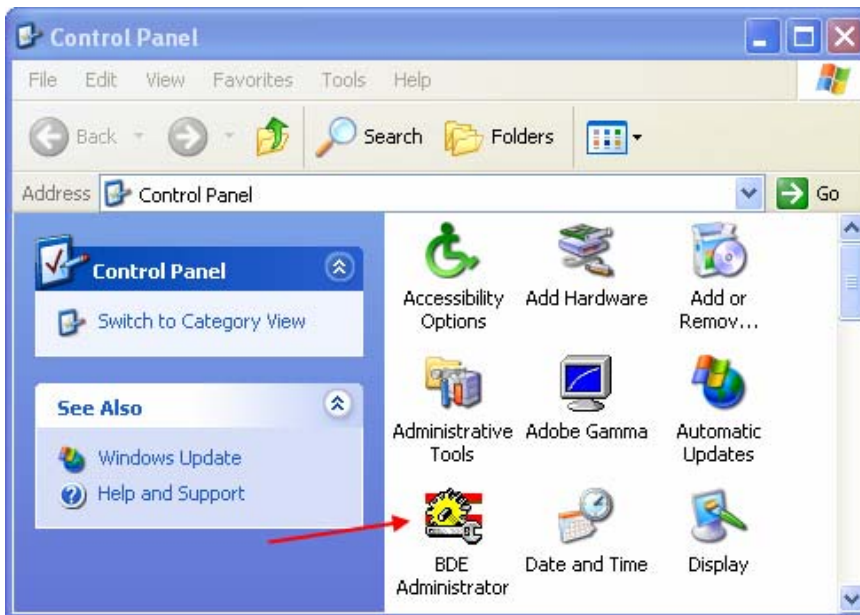
1. Tell Windows Vista that Simply Budgets **does** have permission to write the file to C:\

That was what the initial instructions at the beginning of this document were all about. If that had solved the problem you would not be reading this so if this applies to you, you need to go to Solution 2 as follows...

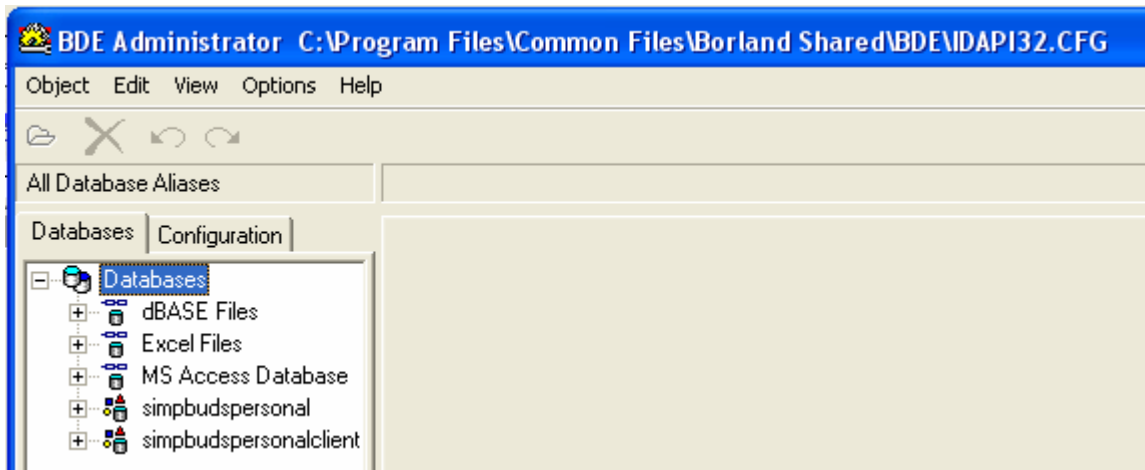
2. Tell the Borland Database Engine to put the file somewhere it **DOES** have permission.

Solution 2.

1. Click on your 'Start' Button and select 'Control Panel' from the menu.
2. Look for and open 'BDE Administrator'. You may have to click on "Switch to Classic View" before you will see the icon as shown below.



3. Select the Databases Tab on the left hand side of the screen and locate and double click on the word 'Databases' in the white area below the Tab. Check to see that the two entries at the bottom are there (simpbudspersonal and simpbudspersonalclient).

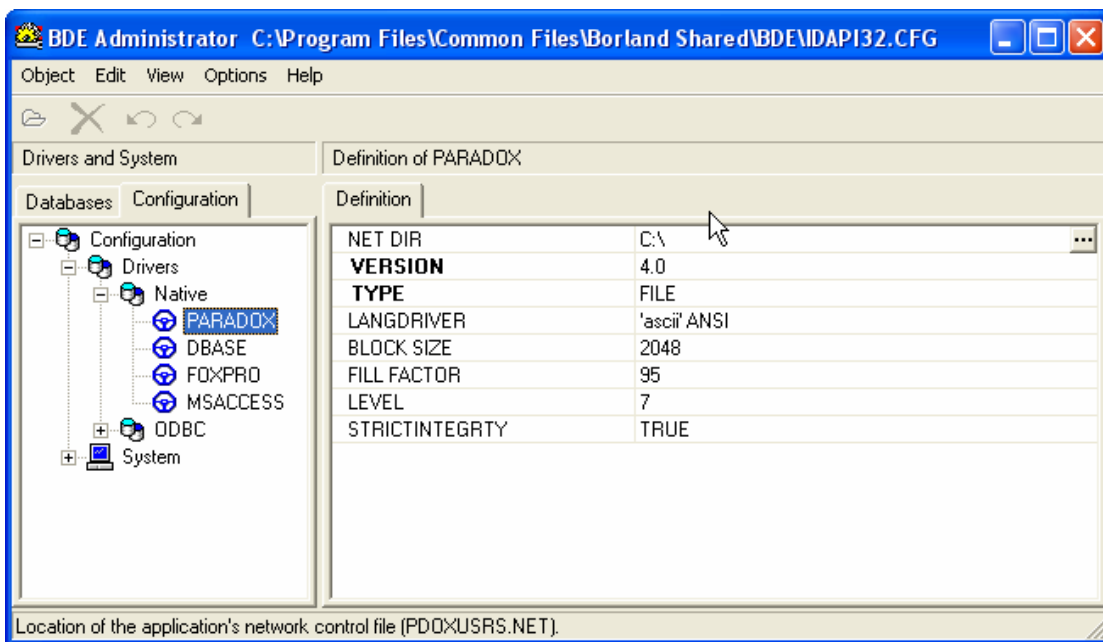


If they are not, something has blocked their installation (a firewall or an anti-virus program may have done this) and you will either have to re-install Simply Budgets after closing the offending application or manually add them (see steps 10 and beyond at the bottom of this document).

4. Select the 'Configuration' tab.

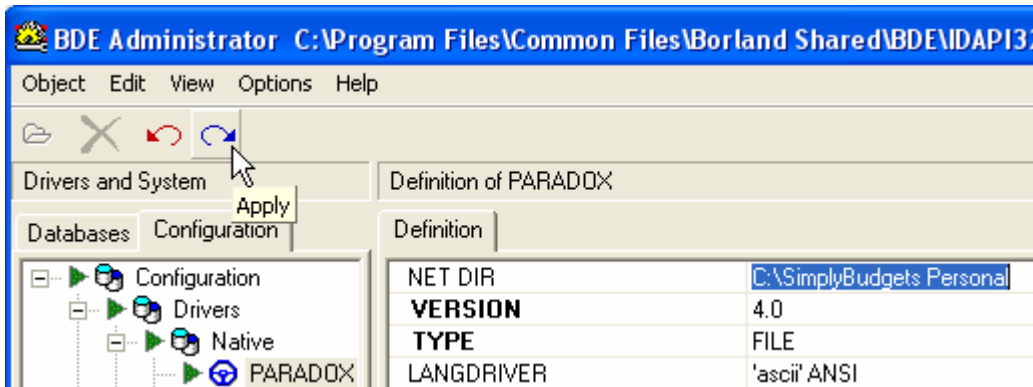
5. Double click on the word 'Configuration' (not the tab), then 'Drivers' and then 'Native to open up the contents of each (see below).

6. Click once on 'PARADOX' and on the right hand side of the screen click in the space after the letters 'C:\' beside NET DIR.



7. Type immediately after the C:\ so the new entry in the box is **C:\SimplyBudgets Personal** EXACTLY AS SHOWN. There should only be one space as shown and it IS case sensitive.

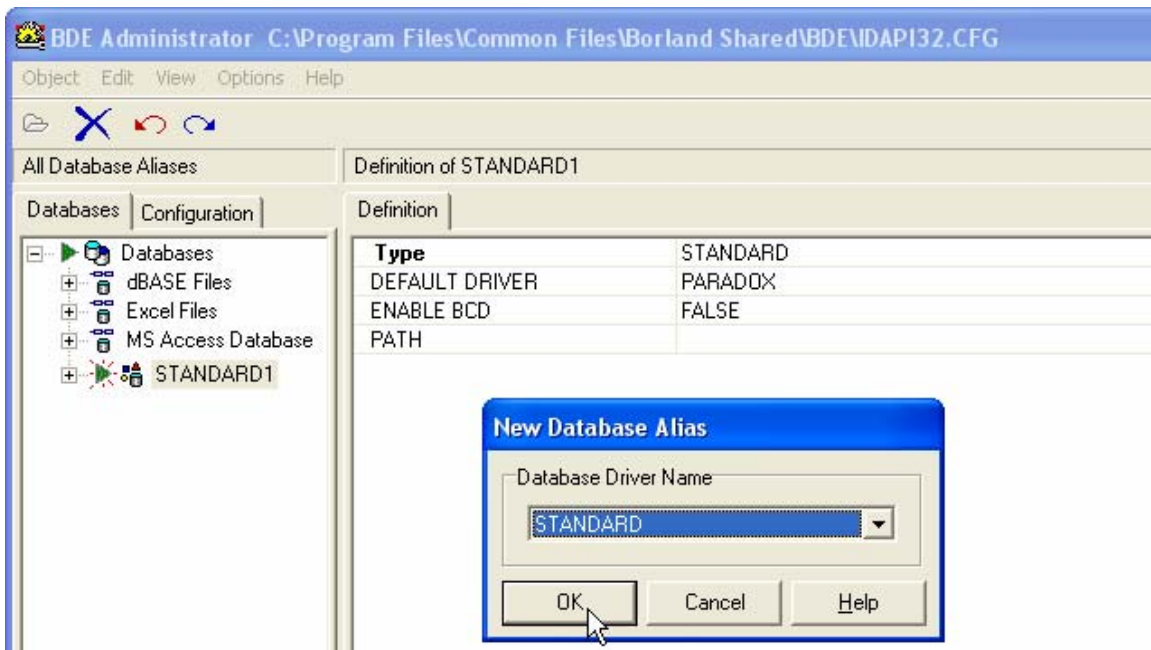
8. Click on the 'Apply' button as shown below to save the change.



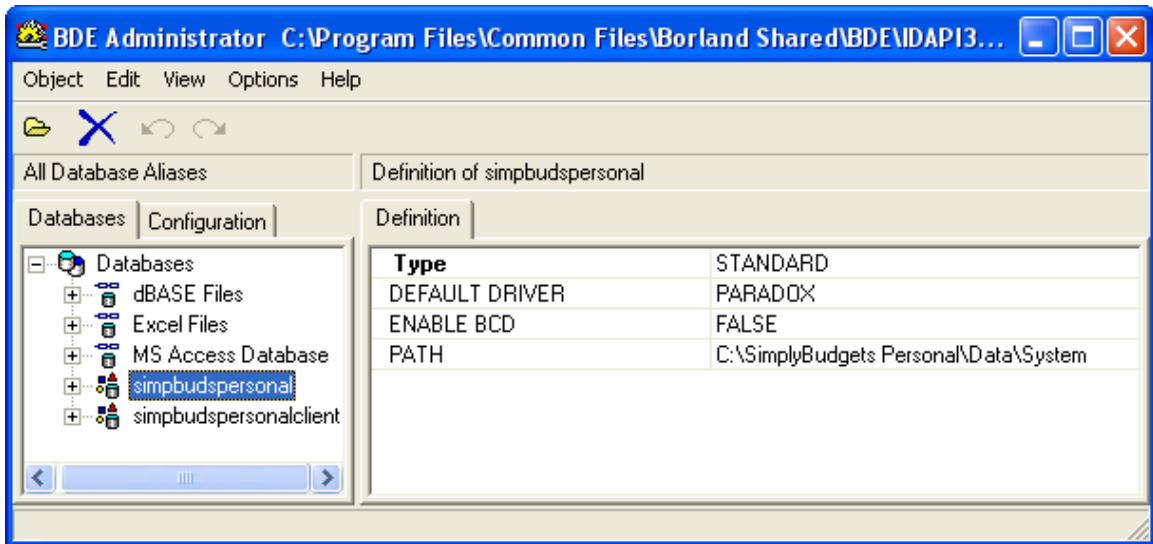
9. Close bdeadmin.exe (click on the X in the top RH corner) and run Simply Budgets. It should now function without any error messages appearing. If so you are finished!! If not go back and check that steps 4 to 8 were successful and that the new address for NET DIR was saved.

The following steps are only for those users who need to manually add the missing Database entries as mentioned in step 3 above.

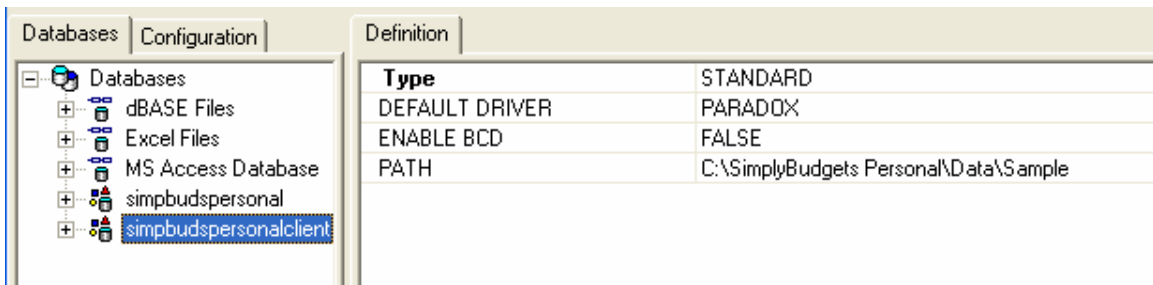
10. With 'bdeadmin.exe' open and the 'Databases' tab selected, to manually add the missing entries one at a time select 'Object' > 'New' and then OK as shown below.



11. Type 'simpbudspersonal' over the word 'STANDARD1' and then complete the right hand side of the screen exactly as shown below



12. Add a second line and complete it exactly as shown below.



Apply the changes and make sure you have also completed steps 7 to 12 above.

If you still can not resolve the problem contact support@simplybudgets.com